

## IR SENSOR SMART DOOR LOCKING SYSTEM

**\*GL.Bhaskar Reddy \*\*PS. Abubakar \*\*\*B.Bhavana**

\*Department of Electronics and Communication Engineering,  
Madanapalle Institute of Technology And Science

Kadiri Road, Madanapalle 51732, Chithoor Dist, Andhrapradesh, 18691A0422@mits.ac.in

\*\*Department of Electronics and Communication Engineering,  
Madanapalle Institute of Technology And Science, Kadiri Road, Madanapalle 517325, Chithoor  
Dist, Andhrapradesh, 8691A0402@mits.ac.in

\*\*\*Department of Electronics and Communication Engineering,  
Madanapalle Institute of Technology And Science, Kadiri Road, Madanapalle 517325, Chithoor  
Dist, Andhrapradesh, 18691A0423@mits.ac.in

### Abstract

This pandemic situation we are trying to restrict the people in public places like metro stations, shopping malls, cinema hall, educational institutions etc. By checking their body temperature. For this purpose, security guard uses one Infrared Thermometer. In this project to reduce the human involvement at the entry points to check body temperature, we proposed a IR sensor based smart door locking system. In the proposed system one IR sensor is used to measure the body temperature at the entrance and the door will open automatically only when the body temperature of a person less than specified level. For Government/Public offices and educational institutions we also include one more IOT based feature in this proposed system. At the door entrances when person punch its ID card or figure and he is having body temperature more than specified limit then door is not opened and his illness report is also send it to HR or higher authorities of the organization. Python programming language is used for developing the system. All the operation is controlled by Arudino microcontroller

### I. LITERATURE SURVEY

#### INTRODUCTION OF SMART DOOR LOCK

Security describes prosperity and property protection. Security at home and in all spots is preeminent. Outside a customary entrance that used the key can be easily opened by an unapproved individual or criminal expecting they have the right key. This will allow them to take everything huge in the house. Today correspondence progressions are ending up being more all over and new components are open to chip away at people's lives, so we use splendid doorway locks. Security in insurance, workplaces and prosperity is of head importance. We need to take incredible thought of these things to avoid pointless damage. There are various structures as of now set up to give security, among those micro-controllers considering a doorway lock system is likely the best method for giving security. An astute lock is an electromechanical key expected to perform entrance lock and lock limits when it gets such requests from an endorsed contraption that uses a distant show and a cryptographic key to work with the affirmation cycle. It in like manner sorts out some way to get to and send alerts for various noticing events and other huge events associated with contraption status. Shrewd locks can be considered to be a component of an adroit home, showing in fig1.

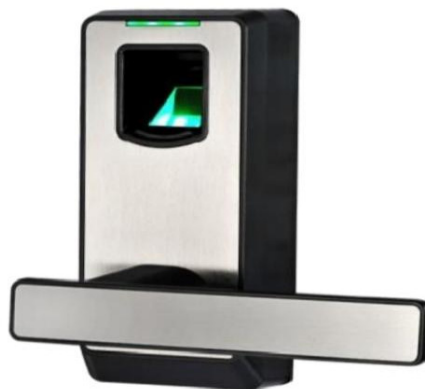


Fig 1.1 finger print door lock

Many shrewd locks are fitted to machine locks and truly improve the ordinary lock. As of late, shrewd lock controls have additionally showed up available. Shrewd keys, as conventional keys, need two vital parts to work: lock and key. On account of these electronic keys, the key is anything but a versatile key yet a cell phone or an extraordinary key coxcomb extraordinarily intended for this reason that makes remote the security expected to open the entryway naturally. Brilliant keys can concede or deny remote access through the portable application. Some brilliant keys incorporate an under-

lying Wi-Fi association that permits observing highlights, for example, access notices or cameras to show the individual mentioning access. A few savvy locks work with a brilliant doorbell to permit the client to see who and when the individual is at the entryway. Many savvy keys presently have Biometric highlights, like finger impression sensors. Biometrics are turning out to be progressively well known on the grounds that they offer more assurance than private catchphrases. This is on the grounds that they utilize actual elements that are unique in relation to the put away data.

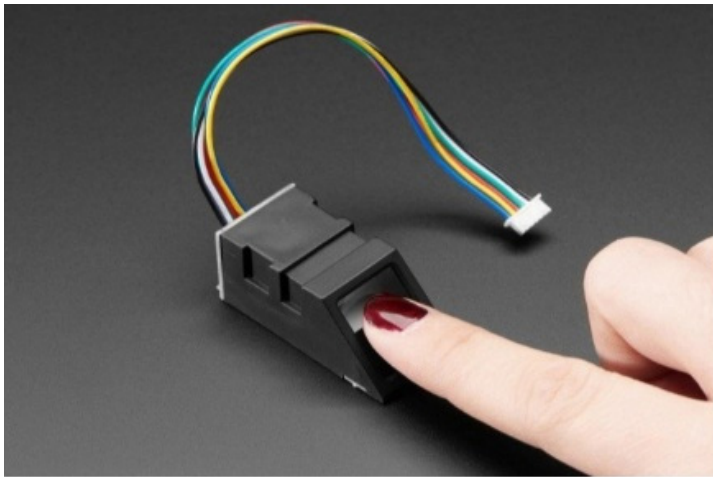


Fig 1.2 fingerprint sensor

The finger impression sensor we use is an optical kind, there are two extra sorts of capacitive sensors that can be found on cell phones and ultrasonic gadgets, which are in the testing stage, and both of these choices are costly, so we will zero in on them. this is a visual type of this electronic side interest and comparative activities. Fig 1.2 the way this unique mark sensor works is that it snaps a photo of our fingers, and afterward utilizes a specific calculation to match it to the data set and show a similar outcome. Safeguard your task with biometrics this across-the-board view finger impression sensor will make adding unique mark identification and check a lot simpler. These modules are normally utilized in safes there is a strong dsp chip that empowers picture delivering estimation, highlights securing and search. Associate with any microcontroller or framework with a TTL sequential, and send information bundles to take photographs, print, hash and search. You can likewise enroll new fingerprints straightforwardly up to 162 fingerprints that can be put away in inside FLASH memory. There is a red LED on the focal point that enlightens the focal point of the picture so you realize it works. The Rugged Panel Mount Fingerprint Sensor with Bi-Color LED Ring even has a LED ring worked around the

identification cushion, which can be set to red, blue or purple (as well as some blurring/flickering impacts) for an extraordinary client experience. The expression "security" alludes to the shielding of life and property. The security of the house is significant. Beside the typical way, a keyed entryway can be effectively opened by an unapproved individual or a criminal with the right key. They will actually want to take everything significant in the house therefore. These days, media transmission advances are turning out to be further developed, with more imaginative highlights to work on living souls. This task will utilize the Bluetooth ability on your telephone to open the entryway naturally, permitting you to match up your telephone straightforwardly with the lock. In the event that an approved individual is distinguished, it will naturally open. The entryway will open after a brief time span has elapsed, and it will consequently close after that period has passed. As mentioned earlier, the purpose of this project is to address one of the security concerns of the current society. Even with the advent of technology, it has become increasingly difficult for people to find better security solutions. IoT has proven to deliver a variety of security solutions, and this paper proposes the best solution for one such issue. Various home automation systems based on Bluetooth, ZigBee, and RF modules have already been introduced. All previous systems lacked a wide range of accessibility, a secure alarm system, and a monitoring system. It is not the key used in this system, but there is a brand-new door with good mechanical design and robust lock system that maintains the original look of the door. As for the device, developed by home security frameworks, IoT takes on a critical role. The key point is to build accessible a program that can help turn a common doorbell ring into a clever framework that provides visitor data and moreover it activates cell phone login response. IoT technology is that interaction between individuals and individuals, network-to-machine communication network. Data-based application services and communication technologies are actively investigated within the data center community

. Above all, the main increase will be determined by the integration services that mix more than 2 parts for the same purpose. Convergence service influences the Internet of Things (IoT) technology, as it allows all objects to produce intelligent service and interoperable communication over wireless or wireless networks. In addition, internet of things trading is considered to be the backbone of the industry in the long run. Internet provides simple and efficient services at any time, on

the far side of the technical and economic limitations, due to temporary and local limitations by providing the necessary services in many different fields. It also facilitates the distribution of smart terminals that include smart phones, in line with the advancement of information and communication technology. Meanwhile, the need for comfort and speed has grown within the economic sectors of modern society. The financial sector, among other fields, requires IoT technology as mentioned above. financial institutions have increased the distribution of vacant and automatic equipment to intensify anger by improving financial services, simplifying business processes, creating a system for themselves, and ultimately reducing costs. Today, technology is an important part of everyone's life. It influences a few aspects of daily life and allows for improvement social synergy, easy transportation, self-indulgence entertainment and media and helps in development tree. The development of several devices such as mobile phones as well computers have made fewer people rely on technology interact with friends, store and retrieve information as photos, videos, documents, and music. The global web is a standard interface used by several devices to create the daily life of many people. The Internet assumed an initial segment in give speedy answers for different issues and has empowered and associated with all far-off areas has added to huge decreases in expenses and energy use. Home mechanization or brilliant home is characterized as innovation execution inside the home climate to give the opportunity and security of its occupants.

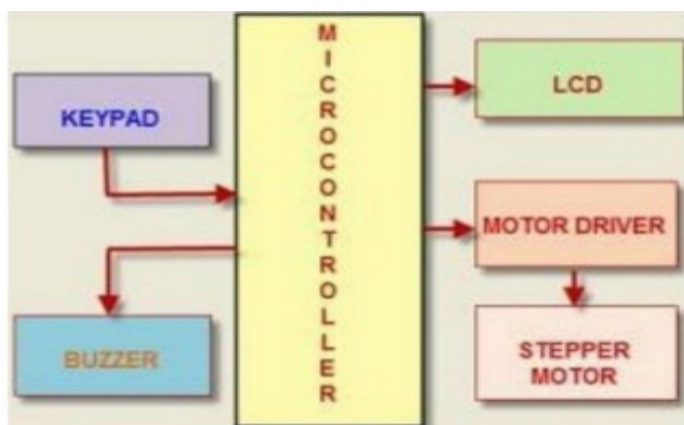


Fig 1.3 Microcontroller

## 1.2 PROBLEM DEFINATION

This unique Fig 1.3 impression lock ought to identify just the Bio-Metric of an individual. We can't ready to peruse the internal heat level of an individual whether

to observe he is a functioning individual are not. During this pandemic this is compulsory to really take a look at the temperature of every single individual prior to going into an association. To defeat this issue, we are fostering an IR Sensor Smart Door Lock.

## 1.3 OBJECTIVE OF PROJECT

- In this project we are going actually take a look at the temperature of a human body before he/she go into any association.
- In this pandemic circumstance, essential examination is expected to enter any individual a specific association. Right now we as a whole are checking a physically with assistance of another individual (security).
- To lessen the human association, we had fostered this IR Sensor Smart Door LockingSystem.

## 1.4 ORGANISATION OF DOCUMENTATION

- art 1 incorporates the presentation about Smart entryway lock and applications. It gives the venture meaning of our undertaking and the short presentation about the work done in the task which is consider as the goal.
- Section 2 in this part we had concentrated on the references connected with ourventure.
- Section 3 gives the investigation of our task which tells programming we used to foster IR Sensor Smart Door Locking System.
- Section 4 in this part we had examined with regards to our proposed strategy and the employments of our venture.
- Section 5 shows the code and the result of the code in the wake of ordering It in a specific programming.
- Section 6 finish up the venture by giving the full data with respect to how we had treated how it should function.
- Section 7 shows the references from various papers connected with our undertaking which depends on iot

## 2.1 INTRODUCTION

A writing study addresses an investigation of already existing material on the subject of the report. This incorporates

1. Existing hypotheses about the subject which are acknowledged all around.
2. Books composed on the theme, both conventional and explicit.
3. Research done in the field generally in the request for most established to most recent.



## 2.2 EXISTING SYSTEM

- Face acknowledgment framework is extensively utilized for human ID on account of its ability to quantify the facial focuses and perceive the character in a subtle manner. The utilization of face acknowledgment frameworks can be applied to observation at home, work environments, and grounds, in like manner. The issue with existing face acknowledgment frameworks is that they either depend on the facial central issues and tourist spots or the face embeddings from Face Net for the acknowledgment interaction. In this paper, we propose a various leveled network (HN) system that utilizes pre-prepared constructions to recognize faces followed by face inserting confirmation utilizing Face Net. We have additionally planned an ongoing security entryway locking framework associated with the raspberry pi according to the proposed technique.
- The Automated entryway lock framework was recently utilized utilizing various strategies and methods. In any case, the reason for this paper is to acquaint one more simple way with accomplish a similar outcome. This cycle is fundamentally centered around the utilization of Arduino microcontroller and L293D engine driver IC as the center regions for this undertaking.
- The facial acknowledgment framework is generally utilized in human distinguishing proof on account of its capacity to quantify facial focuses and visual sharpness. The utilization of face acknowledgment frameworks can be applied to home reconnaissance, working environments, and grounds, as proper. The issue with existing face acknowledgment frameworks is that they depend on key facial elements and motions or looks from Face Net through the acknowledgment interaction. In this paper, we propose a progressive organization (HN) system that utilizes pre-prepared constructions to identify faces followed by check from facebook installing utilizing Face Net. We likewise planned an ongoing security entryway locking associated with the raspberry Pi according to the proposed strategy

## 2.3 DISADVANTAGES OF EXISTING SYSTEM

Because of the plan and size of the cell lodging in the old restorative offices it isn't workable for prison guards to be shipped off the finish of the cell lodging where cell evacuation controls are typically shut to decide if they are shut or not. also locked it is basically impossible to monetarily add an open or shut cell reference

to existing lock frameworks. This is an issue in some high-security offices and in a few huge jails some lock frameworks expect that all cell entryways be deterred prior to locking all streets some place and numerous mobile phone lock frameworks are undermined by controller. lock framework where different entryways stay open. This issue is exacerbated by the absence of far-off pointers for the cell division entryway. In the event that the opening/shutting, locking/opening of all divisions isn't known, prison guards generally in gatherings of a few groups ought to actually examine the state of every phone. For enormous cell hinders, this might expect no less than two hours every day. Genuine security issues can emerge when cell entryways are believed to be shut, or open. The security of the watchman and the security of the whole jail can be compromised with eradication again from the last cell over Gadau and a key gatekeeper key is utilized to clear different detainees. Beside the undeniable security issues that might emerge, the absence of data about the situation with cell entryways, combined with successive disappointments of lock frameworks, makes recovery authorities lose trust in lock frameworks. This can expand strains among authorities and detainees and along these lines lead to an increment in the tension on detainees, e.g., to keep on shutting. At these times, all individuals have their own stockpiling region with the assistance of locks to restrict admittance to their own things or protection, yet there are many imperfections in these locks, for example, simple admittance to helpless security and the trouble of managing the lock in one manner, which is the customary key and there could be no alternate way. The subsequent issue is the event of blunders on the human side so loss of the key is truly conceivable, and you have many keys that uncover misfortune or burglary effectively, and remember to lock the lock, and here the lock can't be locked without help from anyone else on the grounds that it is mechanical and doesn't rely upon electro mechanical. Our concern articulation for this task will be three key components. To begin with, house lock cushions are frequently tormented by actual mistakes. These mistakes incorporate the way that the lock cushions get rusted over the long haul, the lock cushion hit machine disappointment are broken parts inside causing

## References

- [1] C. Roman, R. Liao, P. Ball, S. Ou and M. de Heaven, "Detecting on-street parking spaces in smart cities: performance evaluation of fixed and mobile

sensing systems”, Transactions on Intelligent Transportation Systems, vol.19, no.7, pp. 2234–2245, Jan-2018.

[2] Chatzigiannakis, A.Vitaletti, and A.Pyrgelis, “A privacy-preserving smart parking system using an IoT elliptic curve based security platform”, Computer Communications, vol. 89–90, pp. 165–177, Jan-2016.

[3] H. Arasteh et al., “Iot-based smart cities: a survey”, in proceedings of 16th International Conference on Environment and Electrical Engineering, vol.12, pp. 108–169, June-2016.

[4] A. Khanna and R. Anand, “IoT based smart parking system”, in Proceedings of International Conference on Internet of Things and Applications ,vol.12 pp. 266–270, Jan-2016.

[5] E.Cassin Thangam<sup>2</sup>, M. Mohan<sup>1</sup>, J. Ganesh<sup>3</sup>, C.V. Suresh<sup>4</sup> “Internet of Things based Smart Parking Reservation System using Raspberry-pi”, International Journal of Applied Engineering Research, vol.13,pp. 5759-5765, Jan 2018.

[6] S.S.Thorat, Ashwini M, Akanksha Kelshikar, Sneha Londhe, Mamta Choudhary “IoT Based Smart Parking System Using RFID”, International Journal of Computer Engineering In Research Trends vol 4, pp. 2349-7084, Jan2017.

[7] W. Wang, Y. Song, J. Zhang and H. Deng “Automatic parking of vehicles: a review of literatures”, International Journal of Automotive Technology, Vol. 15, pp. 967–978, Jan-2014.

[8] Ling Hu and Qiang Ni, “IoT-Driven Automated Object Detection Algorithm for Urban Surveillance Systems in Smart Cities”, internet of things journal,

vol.5, pp. 230-270, Apr- 2018.

[9] C. W. Hsu, M. H. Shih, H. Y. Huang, Y. C. Shiue, S. C. Huang, "Verification of smart guiding system to search for parking space via DSRC communication", vol. 12th pp. 79-80, Jan-2012.

[10] T. N. Pham, M. F. Tsai, D. B. Nguyen, C. R. Dow and D. J. Deng, "A CloudBased Smart-Parking System Based on Internet-of-Things Technologies", in vol. 3, pp. 1581-1591, Mar-2015. 40.

[11] A. I. Niculescu, B. Wadhwa and E. Quek, "Technologies for the future: Evaluating a voice enabled smart city parking application", 4th International Conference on User Science and Engineering, Vol.12, pp. 46-50, Jan-2016.

[12] A. Roy, J. Siddiquee, A. Datta, P. Poddar, G. Ganguly and A. Bhattacharjee, "Smart traffic and parking management using IoT", Annual Information Technology, Electronics and Mobile Communication Conference, vol.12, pp. 1-3, Dec- 2016.

[13] K.Hassoune, W. Dachry, F. Moutaouakkil and H. Medromi", Smart parking systems: A survey", International Conference on Intelligent Systems: Theories and Applications, vol.11, pp. 1-6, Jan-2016.

[14] M. Idris, Y. Leng, E. Tamil, N. Noor, and Z. Razak, "Car park system: A review of smart parking system and its technology", Information Technology Journal, vol. 8, pp. 101–113, 2009.

[15] J. W. Hsieh, S. H. Yu and Y. S. CChen, "Morphology based license plate detection in images of differently illuminated and oriented cars", Journal of Electronic Imaging, vol. 11, pp. 507-516 June 2002.